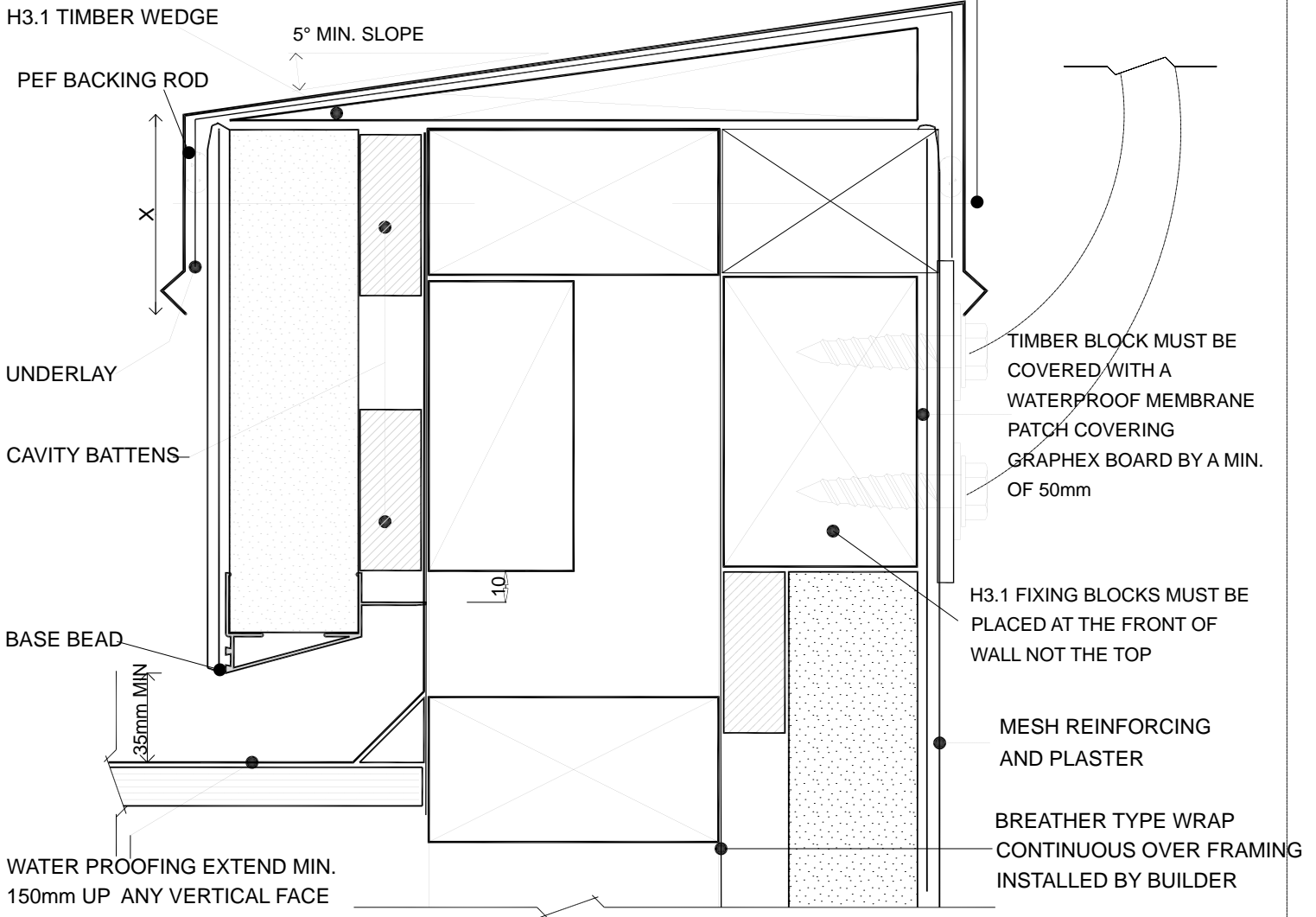


NOTE : CONTINUOUS METAL
PARAPET (CAP MUST BE SIDE
FIXED BELOW PEF ROD) AS
SUPPLIED AND FITTED BY
OTHERS



X = VARIABLE ACCORDING TO WINDZONE
REFER TO E2/AS1, Table 7.

23 BALCONY CAPPING