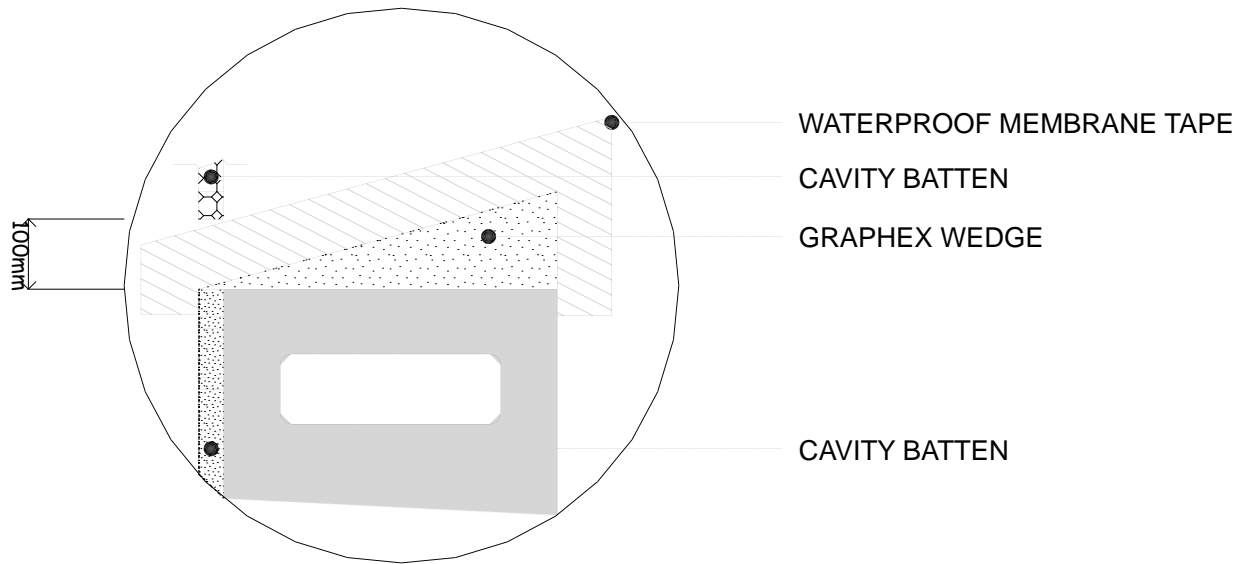


JAMB



HEAD

NOTE: A WEDGE OF GRAPHEX WITH A 15° SLOPE MUST BE PLACED ON TOP OF THE METER BOX. IT MUST BE TAPED ONTO THE BUILDING WRAP USING A WATERPROOFING MEMBRANE TO SHED WATER TO THE OUTSIDE EDGE. CARE MUST BE TAKEN TO ENSURE THE TIP OF THE WEDGE IS NOT BLOCKED BY A VERTICAL BATTEN

51 METER BOX - HEAD AND JAMB